



United Way of Mat-Su

UNITED WAY OF MAT-SU

ANNUAL REPORT 2019



*"The smallest act of kindness is worth more than
the grandest intention"*
-Oscar Wilde



This has been a year for learning what we can truly accomplish if we work together. In the wake of the McKinley Wildfire, we witnessed unspeakable loss, but also immense compassion.

We have been honored to serve alongside several other Valley agencies in response to the fires. Many community partners, neighbors and friends have made possible the road to reconstruction for those who have lost everything in the fires.

Support for those affected by the November 2018 Earthquake is ongoing. Efforts will continue through the winter. Our sincere thanks to all who have dedicated so much time and effort to earthquake relief.

And, in the midst of emergency, we are more grateful than ever for our volunteers, partners and sponsors, whose support meant we were able to provide tried and true events like Stuff the Bus, financial support like our Community Impact Grants, and rise to the new challenges the Mat-Su has faced.

We need you because YOU are United Way of Mat-Su! Thank you,

Stephanie L Allen



STEPHANIE L. ALLEN

Executive Director

2019 COMMUNITY IMPACT GRANTS

In 2019, we were able to support local agencies striving to serve Mat-Su residents by awarding \$100,000 across the spectrum of health, social, and human services projects in the Valley.

100K



100K

United Way of Mat-Su

Community Grants for 2020



- Access Alaska - Essential Health Access Program, \$5,000.00
- Alzheimer's of Alaska - Alzheimer's and Dementia Support Program, \$5,000.00
- Alaska Center for Resource Families - Adopt-A-Palooza, \$2,000.00
- Mat-Su Food Bank - Eggs & Margarine, \$7,500.00
- MY House - STAY Suicide Prevention Program, \$5,000.00
- Palmer Senior Center - Seniors Program, \$7,500.00
- Sunshine Community Health Clinic - Chronic Care Management Program, \$2,500.00
- The Children's Place - Counseling Services, \$10,000.00
- Upper Susitna Seniors - Meals on Wheels, \$5,000.00
- Wasilla Area Seniors, Inc. - Senior Nutrition Program, \$7,500.00



- American Red Cross of Alaska - Disaster Response, \$5,000.00
- Family Promise - Shelter Program, \$5,000.00
- Mat-Su Coalition on Housing & Homelessness - Project Homeless Connect, \$1,000.00
- Nine Star - Fuel Cards for Youth, \$2,500.00
- Nugen's Ranch - Work Therapy Program, \$2,500.00
- Salvation Army Mat-Su Corps - Food Pantry, \$7,500.00
- Sunshine Transit - Transit Services, \$5,000.00



- Big Brothers Big Sisters - Match Support/Personnel, \$4,500.00
- Boys & Girls Club Mat-Su Clubhouse, \$5,000.00
- CCS Early Learning - Head Start, \$5,000.00



DID YOU KNOW?

By donating to United Way of Mat-Su, you ensure that these annual Community Impact Grants are distributed to hardworking nonprofits Valley-wide. Your generous support allows UWMS to show our support for other hardworking agencies through the distribution of the annual grants.

DONOR THANKS

Alaska Behavioral Health
Alaska Communication Systems
Alaska Marine Lines
Alaska Mental Health Trust Authority
Alaska Native Tribal Health Consortium
Alaska Railroad
Alaska Sales & Service Mat-Su
Alaska USA FCU
Alaska West Express-Anchorage
Alyeska Pipeline Services
AT&T Alascom
Bolshio Misha Inc.
Boys & Girls Clubs of Southcentral
BP
Bristol Bay Native Corporation
CCS Early Learning
CIRI-Board of Directors
City of Palmer
City of Wasilla
ConocoPhillips
Denali Alaskan FCU
Doyon Drilling, Inc.
The Ellis Group
Enstar
ExxonMobil
FedEx
First National Bank Alaska
Fred Meyer
GCI
General Electric
Illinois Tool Works-Hobart Services
Jacobs Engineering Group
Kakivik Asset Management
Lynden Air Cargo
Matanuska Valley Federal Credit Union
Mat-Su Borough School District
Mat-Su Health Foundation
Mat-Su Miners
Mat-Su Regional Medical Center
Mat-Su Services for Children and Adults

MEA Charitable Foundation
MEA
Mat-Su Services for Children & Adults
MTA
New Horizons Telecom
Northrim Bank
O'Reilly Auto Parts
Palmer Rotary
Peak Oilfield Service Company
Petrotechnical Resources of Alaska
Providence Health & Services
R&R Productions
Rasmuson Foundation
Recover Alaska
State of Alaska SHARE Program
Stage 2 Studios
Sunshine Community Health Centers
Target
UAA College of Arts & Sciences
UAA College of Health
United Utilities
UPS
Walmart
Wells Fargo
Worley

We extend special thanks & gratitude to all who donated in support of McKinley Fire Relief efforts, especially Towz R Us, Magic Metals, Susitna Sealcoating LLC, 907 Diesel & Fleet, Mat-Su Health Foundation, Sheep Creek Lodge, Ritchie Bros. Auctioneers and all those who contributed to our winter gear drive.



DONOR THANKS

FOUNDATION

Marcus Adams
Clifford Alexander IV
Lloyd Allen
Ginger Ameigh
Holly Ames
Joseph Anderson
Brandie Ansley
Tiffany Appleton
Lana Arsenault
Kara Aune
Roger Baird, Jr.
Devon Barber
Shawn Barnes
Mackenzie Berensmann
Esther Berezyuk
Crystal Bijak
Abbi Boucher
Jessie Boulter
Michael Boyter
Gina Bradley
Grendal Brenner
Valera Brickel
Laura Brockman
Sarah Brooks
Peggy Brower
Barbara Brown
Barbara Brown
Thomas Brown
John Butcher
Sharon Bulawa
Mark Caputo
Judith Cardoso
Torri Carlson
Wayne Carney
Bethany Carrier
Lori Cato
Harmony Chadwick
Steve Chancey
Magali Chappelle
Stephen Charles
Dan Cheyette
Michael Chipman
Patrick Cockrell Sr.
Desiree Compton
Scott Conroy
Christopher Cook
Alexia Cook-Griffeth
Kluane Coppa
Ryan Cordie
Tracy Crockett
Cassandra Cutler
Jacqueline Cyphert
John Damjanovich
Barry Dearborn
Jenna Deason

Chanizty Degregori
Cindy Deschamps
Cory Dodds
Linda Duke
Tracey Eason
John Elbeck
Selden Endes
Edward English
Sharla Erickson
Lance Fleury
Victoria Flint
Christopher Forschen
Micah Freeman
Jose Galvan
Tony Galvin
Goody Gayman
Walter Gearing
Charles Gerhardt
Patricia Gilbert
David Gilnes
Harry Gochenauer
Krista Godwin
Bryan Gorne
Redona Grazio
Julie Griffith
Thaddeus Gross
Margaret Hale
Kristy Hales
Michele Harmeling
Christine Harrison-Davenport
Jeffrey Hartman
Teresa Hassen
Sierra Hawthorne
Alia Heck
William Heim
Juli Hemphill
Vera Hershey
Jennifer Higgins
Kathleen Hite
Jennifer Hoffman
Kari Holsclaw
Charity House
Terrence Howard
Jenny Howe
Hannah Hunter
Chase Huston
Rachel Ingham
Cedar Jenkins
Nick Jenkins
Hailee Jensen
LaNee Johnson
Nicole Justice
Summer Keelan
Christine Kehoe
Brandon Kell

CORNERSTONE

Dawn Baham
Dan & Marcie Bentti
Carri Berger
Michael Burke
Helena Burkett
Kathleen Cameron
Amanda Carroll
The Combs Family
Kristofer Don
Rachel Jaime
William Hurr
Annette Erickson
Eric Ernest
Julie Estey
Brad Gordon
Sherrie Greenshields
Cathy Gruver
Katie Henson
Danielle Howard
JaJames Taclet
Klinton VanWingerden
Sean Walsh
Colleen Weikel
Larry & Connie Wiget

ELITE

Jennifer Stricklan

LEADER

Brian Beauvais
Daryl Beeter
Nathaniel Carson
Norbert Chowaniec
Ryan Jiminez
Connie & Jim Egger
Susan Ellis
Jason Green
Shane Groth
Krystin Habighorst
Rod Hanson
Janet & Les Helfrich
Jacqueline Kenshalo
Mark Lackey
Harold Richardson
Becky Stoppa
Andrea Metcalf
Robert Wissler

VISIONARY

Tim Adamczak
Rick & Stephanie Allen
Colin & Michelle Boyden
Martin Hinshaw
Lyle Stohler

LEGACY

Ed & Elizabeth Ripley



***Thank you for your
generous support!***

EDUCATION

Stuff the Bus 2019

Haircuts, required immunizations, a clothing closet with gently-used treasures and kid-approved backpacks full of needed school supplies: all this, plus resource tables and smiling volunteers made 2019's Stuff the Bus Back to School Fair a big success.

We are so grateful for our friends at Hello Darlin' Salon, Shear Fire Design, Big Lake Community Clothing Closet, Frontline Mission, the Menard Center, and our many community volunteers for their hard work in helping Mat-Su students look and feel their best for the first day of school! Generous support from ConocoPhillips, Kiwanis Club of Palmer, and Mat-Su Health Foundation made this possible.

Through our ongoing partnerships with Mat-Su Borough School District schools, we are privileged to reach Valley students with a variety of resources, support and programming. Our staff coordinates and presents programs and activities for youth in the Mat-Su through the Youth 360 school-based clubs program, Thrive Mat-Su's free youth programs, education and activities (launched in late 2019, and by collaborating with MSBSD schools to identify and address challenges faced by MSBSD families and students.

Thrive Mat-Su Youth Retreat

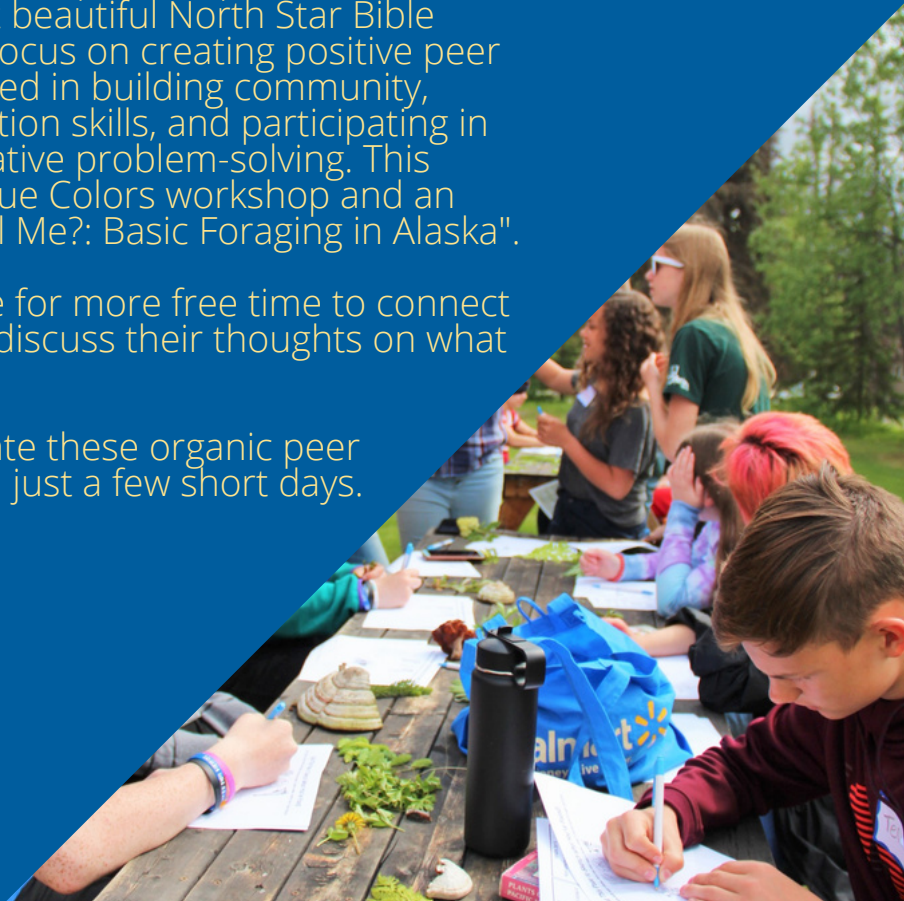
Bringing together exceptional youth for a week of peer-to-peer connections, outdoor recreation and leadership development. The Thrive Mat-Su Youth Retreat is held at beautiful North Star Bible Camp in Willow, AK. Each year's offerings focus on creating positive peer relationships between local youth interested in building community, strengthening leadership and communication skills, and participating in activities that promote teamwork and creative problem-solving. This year's activities included mindfulness, a True Colors workshop and an annual favorite, "Can I Eat This or Will It Kill Me?: Basic Foraging in Alaska".

Overwhelmingly, youth expressed a desire for more free time to connect with their peers, as well as quiet space to discuss their thoughts on what they were learning.

We were more than happy to accommodate these organic peer relationships, forging lasting friendships in just a few short days.

Education Partners

Mat-Su Borough School District
CCS Early Learning
Boys & Girls Club of Mat-Su
Nine Star
Big Brothers Big Sisters Mat-Su



FINANCIAL STABILITY

Project Homeless Connect

Project Homeless Connect brings together Valley agencies in a day of service for those experiencing housing instability and homelessness around the Mat-Su. 2019's event was a day for companionship, community giving and comfort for all who attended. Over 250 Mat-Su residents, identified as in need of help, were able to partake in a hot meal, showers, personal care, resource assistance and gather with others in the warmth at the Menard Center. Thank you to all volunteers and local agencies who labored to give comfort to clients!



FamilyWize Prescription Discount Cards



Throughout the year, we distribute hundreds of prescription discount cards around the Mat-Su. The FamilyWize program, in partnership with United Way, provides up to 42% off of qualified prescription costs after insurance has paid. This program can be a lifesaver—literally! The discount card is available in our office, or for download on our website. Ask your pharmacist to use this discount when you pick up your order!

Mat-Su Valley Resource Guide

A Mat-Su Valley staple for agencies and residents, the Resource Guide is distributed by the thousands annually, providing up-to-date, easy-to-access resources like food, shelter, transportation, activities, medical, substance abuse prevention, education and youth programs information. The Guide is available for download on our website and in limited printed quantities.

Additions and corrections are always welcome!

***To make an addition or correction to the Resource Guide, please email your information as you'd like it to appear:
admin@unitedwaymatsu.org***



HEALTH

Play 60 with the Seattle Seahawks

Hundreds of Mat-Su youth and kids gathered at the Menard Center to run, play and learn new sports skills! Hosted in conjunction with the Mat-Su Seahawks, this fun annual event includes a meet and greet with players from the Seattle Seahawks-and this year's event included Blitz!

Special thanks to Subway of Mat-Su, the Wasilla Lions Club, the Menard Center, Palmer High School hockey, Mat-Su Miners, Lone Wolf Aura, All About Dance, Palmer High School football, Alaska Rugby Union, Kathy Mitchell-Sayer, Sydney Zuyus, and all our volunteers!



Drug Takeback & Safe Drug Disposal/Education

Our annual Drug Take Back Days in April and October help the community dispose of unused, expired prescription drugs, patches, and OTC medications. Safe drug disposal bags are available at participating locations such as local Fred Meyer and Target stores.

Year-round, UWMS and Thrive Mat-Su help to distribute safe drug disposal bags around the community. These single-use bags neutralize prescription pills and liquids, allowing for safe disposal in regular trash receptacles.

Drug bags and educational materials provided by Project Hope.



Parks & Playground Projects

Valley playgrounds and parks are getting facelifts from UWMS volunteers and partners! Whether clearing brush and installing security cameras at the Palmer Amusement Park or helping complete the Ninja Course at Iditapark, we're always on the lookout for ways to make the Valley a safer, more accessible place to play.

Is there a local park or playground near you that could use some TLC? Let us know! Email give@unitedwaymatsu.org or leave us a message via our website.

Senior Farmer's Market Program

UWMS participates annually in providing access to fresh local produce to Valley seniors through the Senior Farmers Market coupon program. Coupons supplied via this program allow seniors to purchase healthy Alaska grown produce at any participating farm stand or farmers market.



2019 VOLUNTEERISM:

Community coming together to serve.

In 2019, our dedicated volunteers donated thousands of hours to our projects across the Mat-Su. YOU distributed over 1,200 backpacks and school supplies to Valley students; assisted over 300 Mat-Su residents with essential services during Project Homeless Connect, and taught over 100 youth a new skill at Play 60. Day of Caring expanded into a Week of Caring, completing tasks for local nonprofits needing a helping hand.



1

2

3

4

5

6

7

8

9

10

11

12

13

14

15

16

17

18

19

20

21

22

23

24

25

26

27

28

29

30

31

32

33

34

35

36

37

38

39

40

41

42

43

44

45

46

47

48

49

50

51

52

53

54

55

56

57

58

59

60

61

62

63

64

65

66

67

68

69

70

71

72

73

74

75

76

77

78

79

80

81

82

83

84

85

86

87

88

89

90

91

92

93

94

95

96

97

98

99

100

101

102

103

104

105

106

107

108

109

110

111

112

113

114

115

116

117

118

119

120

121

122

123

124

125

126

127

128

129

130

131

132

133

134

135

136

137

138

139

140

141

142

143

144

145

146

147

148

149

150

151

152

153

154

155

156

157

158

159

160

161

162

163

164

165

166

167

168

169

170

171

172

173

174

175

176

177

178

179

180

181

182

183

184

185

186

187

188

189

190

191

192

193

194

195

196

197

198

199

200

201

202

203

204

205

206

207

208

209

210

211

212

213

214

215

216

217

218

219

220

221

222

223

224

225

226

227

228

229

230

231

232

233

234

235

236

237

238

239

240

241

242

243

244

245

246

247

248

249

250

251

252

253

254

255

256

257

258

259

260

261

262

263

264

265

266

267

268

269

270

271

272

273

274

275

276

277

278

279

280

281

282

283

284

285

286

287

288

289

290

291

292

293

294

295

296

297

298

299

300

301

302

303

304

305

306

307

308

309

310

311

312

313

314

315

316

317

318

319

320

321

322

323

324

325

326

327

328

329

330

331

332

333

334

335

336

337

338

339

340

341

342

343

344

345

346

347

348

349

350

351

352

353

354

355

356

357

358

359

360

361

362

363

364

DISASTER RELIEF



We are privileged to serve alongside numerous Valley agencies as the coordinating body and charter member of Mat-Su COAD (Community Organizations Active in Disaster).

Long-Term Recovery Group

UWMS and Mat-Su COAD led the fire recovery effort by convening and coordinating the McKinley Fire Long Term Recovery Group.

It can take many months, even years, for survivors of natural disaster to return to their pre-disaster situation. With the help of many community volunteers, partners, local businesses and neighbors, the McKinley Fire LTRG worked throughout the year, including in subzero temperatures, the middle of the night, and in remote locations, bringing food, clothing, furnishings and building entire new homes for fire survivors.

The recovery effort is ongoing as we continue to identify needs in the areas most affected by the fires.

Many thanks to the community members who have volunteered countless hours of their time to see recovery through to completion, particularly LTRG members, case managers, local donors and members of the Donations Management volunteer team.

Mat-Su COAD brings together agencies wishing to assist during disasters and emergencies, providing coordination, collaboration and pooling resources to meet survivors' needs.

In 2019, the expertise of COAD members, and especially the experience of United Way of Mat-Su in responding to local disasters was needed to help those continuing to recover from the November 2018 earthquake. While the earthquake occurred in late 2018, the onset of winter meant delays and headaches for earthquake survivors in the Mat-Su.

Throughout January and until May 2019, UWMS managed the cases of those left without running water, indoor plumbing and adequate heating and help ensure that they would be able to make needed repairs once the ground thawed.



To join Mat-Su COAD, call (907)745-5827 or email impact@unitedwaymatsu.org

EARLY CHILDHOOD PARTNERSHIP



The Early Childhood Partnership engages childcare providers, parents/guardians, partner agencies and early childhood specialists across the Valley to increase resources and foster supportive relationships for families of young children.

Play Time At the Borough Gym

Working with the Palmer Parents Group and funded by Mat-Su Health Foundation, ECP was pleased to host a weekly free Play Time at the Borough Gym during the fall and winter of 2019.

Families with young children ages 6 and under were invited to attend, make new friends and spend every Wednesday engaged in creative, active play. We are hopeful that Play Time will be resumed in the near future.



Center Grants

Through the partnership of Mat-Su Health Foundation, ECP awarded grants to several Valley childcare centers, to be used for improving the safety and security of their facilities. We are pleased to have been able to help centers complete their outdoor playgrounds, repair doors, walkways and heater covers, improve accessibility and more.

Our FY2020 recipients were: A Touch of Home Childcare & Learning Center; Palmer Lifeways; Profiles of Excellence; Ray's Childcare; and Tree of Life Child Development Center. We hope the improvements funded by this grant are enjoyed for years to come!

Early Childhood Partnership
(907)745-5824 | admin@unitedwaymatsu.org





We're building connections for youth at our Houston and Wasilla clubs!



100% of Youth 360's 2019 participants enjoyed...
Ropes courses, service projects, hiking, gardening, art, cooking classes, a grand opening party, a holiday party, and most of all, connecting with other youth.

Youth 360's afterschool clubs are open and free of charge to students at the following schools:

Houston Junior/Senior HS
Wasilla Middle School
Wasilla High School

Clubs are open every school day from 2:15pm-6:00pm and are located on WHS and HJSH school campuses. Free transportation and food are included with all onsite programs.



Visit youth-360.org or call (907)373-3613 for more!

2019 Financial Statements

UNITED WAY OF MATANUSKA-SUSITNA BOROUGH
STATEMENTS OF FINANCIAL POSITION
JUNE 30, 2019 and 2018

	<u>2019</u>	<u>2018</u>
ASSETS		
Current Assets:		
Unrestricted Cash	\$ 456,614	\$ 95,027
Unconditional Promises to Give, Net of Allowance for Uncollectible Promises	76,956	75,150
Investments	156,456	156,456
Grants Receivable	17,409	136,425
Prepaid Expenses and Other Assets	<u>1,311</u>	<u>5,646</u>
Total Current Assets	<u>708,746</u>	<u>468,704</u>
Property and Equipment:		
Property and Equipment	43,171	39,911
Less Accumulated Depreciation	<u>(29,708)</u>	<u>(25,864)</u>
Property and Equipment - Net	<u>13,463</u>	<u>14,047</u>
TOTAL ASSETS	<u>\$ 722,209</u>	<u>\$ 482,751</u>
LIABILITIES AND NET ASSETS		
Accounts Payable	\$ 399	\$ 20,277
Payroll Liabilities	18,721	7,203
Allocations Payable	<u>120,300</u>	<u>97,534</u>
TOTAL LIABILITIES	<u>139,420</u>	<u>125,014</u>
NET ASSETS		
Unrestricted Net Assets		
Designated by the Board:		
Property and Equipment	13,463	14,047
Board Reserve	45,702	45,702
Undesignated	<u>523,624</u>	<u>297,988</u>
TOTAL NET ASSETS	<u>582,789</u>	<u>357,737</u>
TOTAL LIABILITIES AND NET ASSETS	<u>\$ 722,209</u>	<u>\$ 482,751</u>

UNITED WAY OF MATANUSKA-SUSITNA BOROUGH

STATEMENTS OF ACTIVITIES - Page 1 of 2

Years Ended June 30, 2019 and 2018

	<u>2019</u>	<u>2018</u>
CHANGES IN UNRESTRICTED NET ASSETS		
From Cash Operating Activities		
Corporations and Individuals	\$ 214,765	\$ 627,358
Foundations	345,050	-
Government	<u>681,139</u>	<u>241,101</u>
SUBTOTAL - SUPPORT	<u>1,240,954</u>	<u>868,459</u>
Revenue		
Fundraising	22,261	12,096
Other Income	<u>2,335</u>	<u>56</u>
SUBTOTAL - REVENUE	<u>24,596</u>	<u>12,152</u>
TOTAL REVENUE AND SUPPORT	<u>1,265,550</u>	<u>880,611</u>
Expenses		
Program Services	973,191	708,413
General and Administrative	45,961	73,937
Fundraising	<u>17,982</u>	<u>14,023</u>
TOTAL EXPENSE	<u>1,037,134</u>	<u>796,373</u>
Increase (Decrease) in Net Assets from Cash Operating activities (excluding depreciation expense)	\$ <u>228,416</u>	\$ <u>84,238</u>

See Independent Auditor's Report and accompanying notes to the financial statements.



Stephanie Allen
Executive Director



Michele Harmeling
Outreach Coordinator



Becky Stoppa
Impact Director



Jason Ortiz
Development Director



Matt Clayton
Youth Activities Coordinator



Tyler Healy
Youth 360 Director

Staff



Aryne Randall
Wells Fargo

Carolyn Hanson
MTA



Teri Seward
Jenski Automotive

Kathy Mitchell
Aurora Mobile
Apps



Robert Morgan
MVFCU

Sarah Collins
MSHBA



Debbie Fischer

JoAnn Kohler



Teresa Martinez

2019 Board